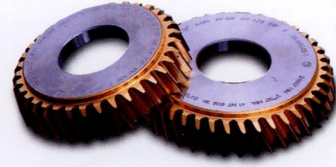
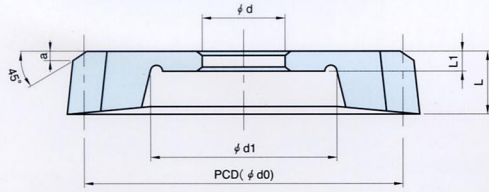


ピニオンカッタ



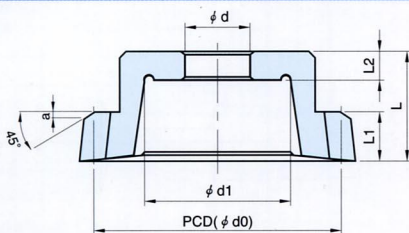
ヘリカル&ディスク形



(mm)

Nominal diameter (呼び径)	モジュール (m)		PCD (d)	d	L	L ₁	d ₁	a
75	0,75	- 1	75	31,742	16	8	50	3
	1,25	- 2	75	31,742	18	8	50	3
	2,25	- 3,5	75	31,742	20	8	50	3
	3,75	- 5	75	31,742	22	10	50	3
100	1	-	100	31,742	18	10	65	4,5
	1,25	- 2	100		20	10	65	4,5
	2,25	- 3,5	100		22	10	65	4,5
	3,25	- 6	100		24	10	65	4,5
	6,5	- 7	100	44,450	28	12	65	4,5
125	1,5	- 2	125	44,450	22	10	85	4,5
	2,25	- 3,5	125	44,450	24	10	85	4,5
	3,75	- 6	125	44,450	26	12	85	4,5
	6,5	- 8	125	44,450	30	12	85	4,5
150	1,75	- 2	150	44,450	24	12	95	4,5
	2,25	- 3,5	150	44,450	26	12	95	4,5
	3,75	- 6	150	44,450	28	14	95	4,5
	6,5	- 10	150	44,450	32	14	95	4,5
175	2	-	175	44,450	26	14	110	4,5
	2,25	- 3,5	175	44,450	28	14	110	4,5
	3,75	- 6	175	44,450	30	14	110	4,5
	6,5	- 10	175	44,450	34	14	110	4,5
	11	- 12	175	44,450	36	16	110	4,5

ベル形



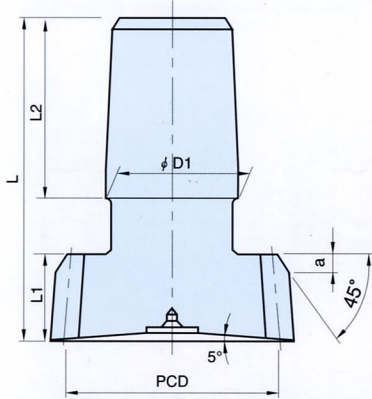
(mm)

Nominal diameter (呼び径)	モジュール (m)		PCD (d)	ϕd	L	L ₁	d ₁	a
50	0,75	- 1	50	19,050	30	12	28	3
	1,25	- 2	50	19,050	32	14	28	3
	2,25	- 3,5	50	19,050	34	16	28	3
	3,75	- 4	60	19,050	38	18	28	3
75	0,75	- 1	75	31,742	34	16	50	3
	1,25	- 2	75	31,742	36	18	50	3
	2,25	- 3,5	75	31,742	38	20	50	3
	3,75	- 5	80	31,742	42	22	50	3
100	1	-	100	31,742	38	18	65	4,5
	1,25	- 2	100		40	20	65	4,5
	2,25	- 3,5	100		42	22	65	4,5
	3,75	- 6	105		44	24	65	4,5
	5,5	- 7	110	44,450	50	28	65	4,5

ピニオンカッタ



シャンク形

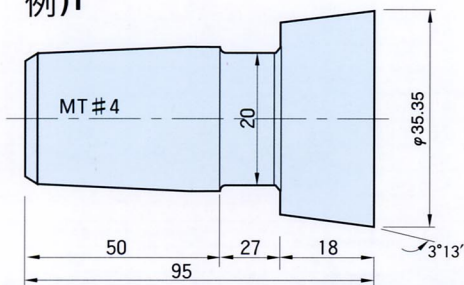


(mm)

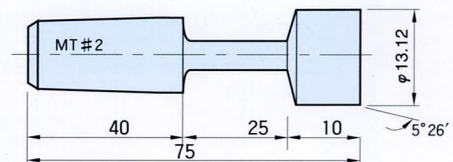
Nominal diameter (呼び径)	モジュール (m)	PCD (d)	L	L ₁	L ₂	D ₁	シャンクテーパー		a	シャンクテーパー のタイプ
25	0.75 ~ 0.9	25	80	10	40	18.0	1/20,020	0,049951	2	Morse Taper No.2
	1 ~ 1.5	25	80	12	40	18.0	1/20,020	0,049951	2	
	1.75 ~ 2.5	25	80	15	40	18.0	1/20,020	0,049951	2	
38	0.75 ~ 0.9	38	100	12	50	24.1	1/19,922	0,050196	2	Morse taper No.3
	0.75 ~ 0.9	38	100	12	50	27.0	1/19,185	0,052125	2	Fellows taper
	1 ~ 1.75	38	100	15	50	24.1	1/19,922	0,050196	2	Morse taper No.3
	1 ~ 1.75	38	100	15	50	27.0	1/19,185	0,052125	2	Fellows taper
	2 ~ 3	38	100	18	50	24.1	1/19,922	0,050196	3	Morse taper No.3
	2 ~ 3	38	100	18	50	27.0	1/19,185	0,052125	3	Fellows taper3
	3.25 ~ 4	38	125	18	50	24.1	1/19,922	0,050196	3	Morse taper No.4
	3.25 ~ 4	45	125	18	50	27.0	1/19,185	0,052125	3	Fellows taper

ピニオンデータ

例)1



例)2



項目		Value of permissible errors		Value of actual reading	
指定	Module or DP	DP 20/40		M 1,5 Spur	
	Pressure angle	30°		20°	
	No. of teeth	26		6	
	Helix angle	Spur		Spur	
	PCD	33,020		9	
	Side angle	2°		2°	
	Material hardness	AISI-M2 Hrc64,5		AISI-M2 Hrc65	
	Accuracy standard & grade	JIS B4356-1964 Class O		JIS B4356-1964 Class O	
精度		Value of permissible errors		Value of actual reading	
	Adjacent pitch error	Within 0,003		Within 0,003	
	Accumalated pitch error	0,012		0,012	
	Tooth space runout	0,010		0,010	
	Tooth profile error	0,006		0,006	